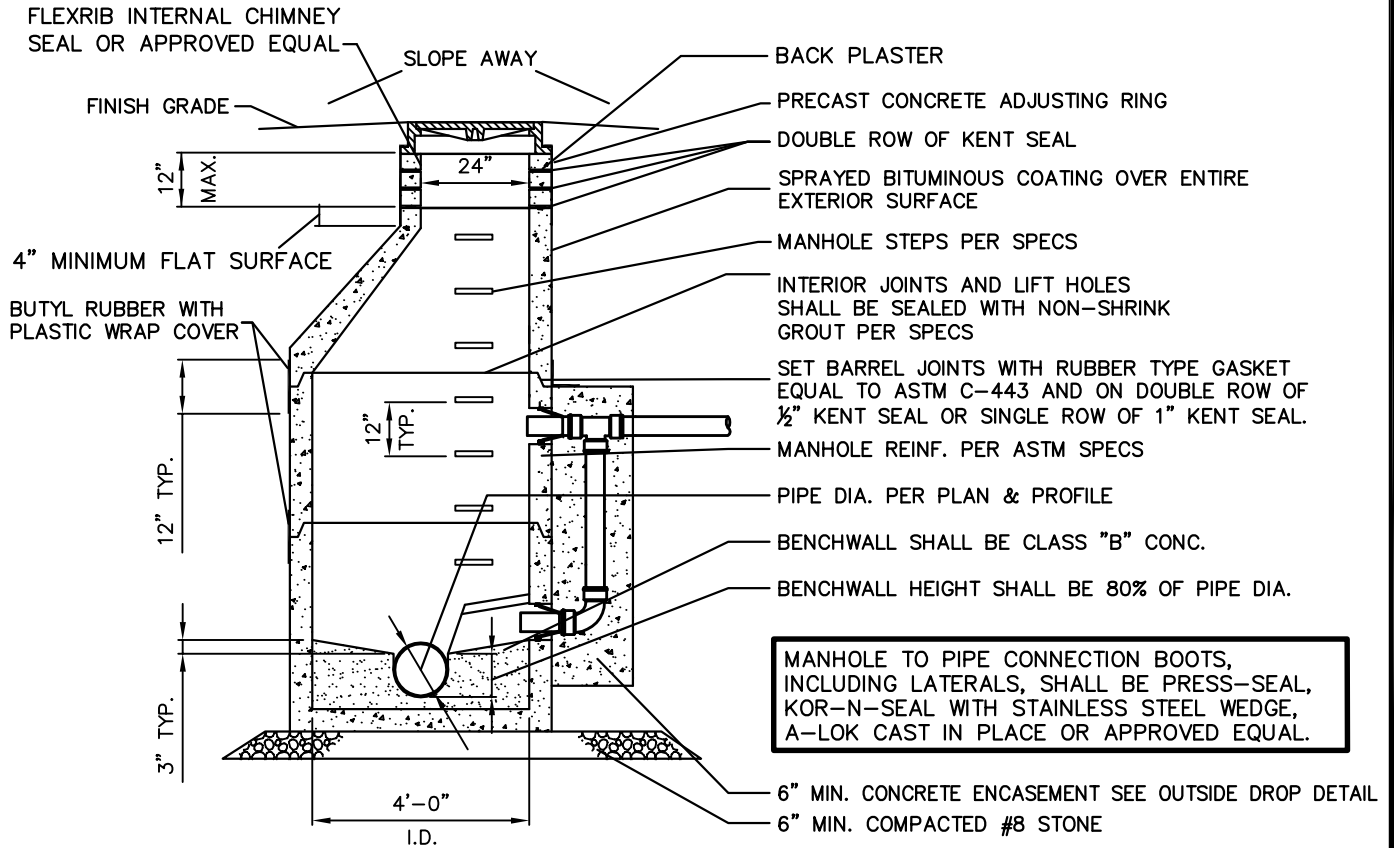


MANHOLE CASTING SCHEDULE

MANUFACTURER	SELF SEALING	WATERTIGHT
NEENAH	R-1772	
EAST JORDAN	1022Z1GS	1022Z1PT

CASTING SHALL BE EITHER SELF-SEALING OR WATERTIGHT, (SEE PLAN & PROFILE SHEETS FOR CASTING TYPE). LIDS SHALL BE STAMPED "SANITARY SEWER" AND HAVE CLOSED PICKHOLES. FRAME SHALL BE SET ON DOUBLE ROW OF 1/2" KENT SEAL, OR SINGLE ROW OF 1" KENT SEAL (SEE MANHOLE CASTING SCHEDULE).



MANHOLE TO PIPE CONNECTION BOOTS, INCLUDING LATERALS, SHALL BE PRESS-SEAL, KOR-N-SEAL WITH STAINLESS STEEL WEDGE, A-LOK CAST IN PLACE OR APPROVED EQUAL.

DROP MANHOLE DETAIL



David A. Clark



CLAY TOWNSHIP REGIONAL WASTE DISTRICT
DROP MANHOLE DETAIL

