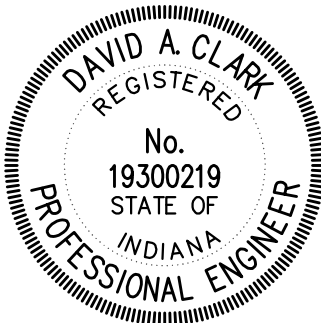
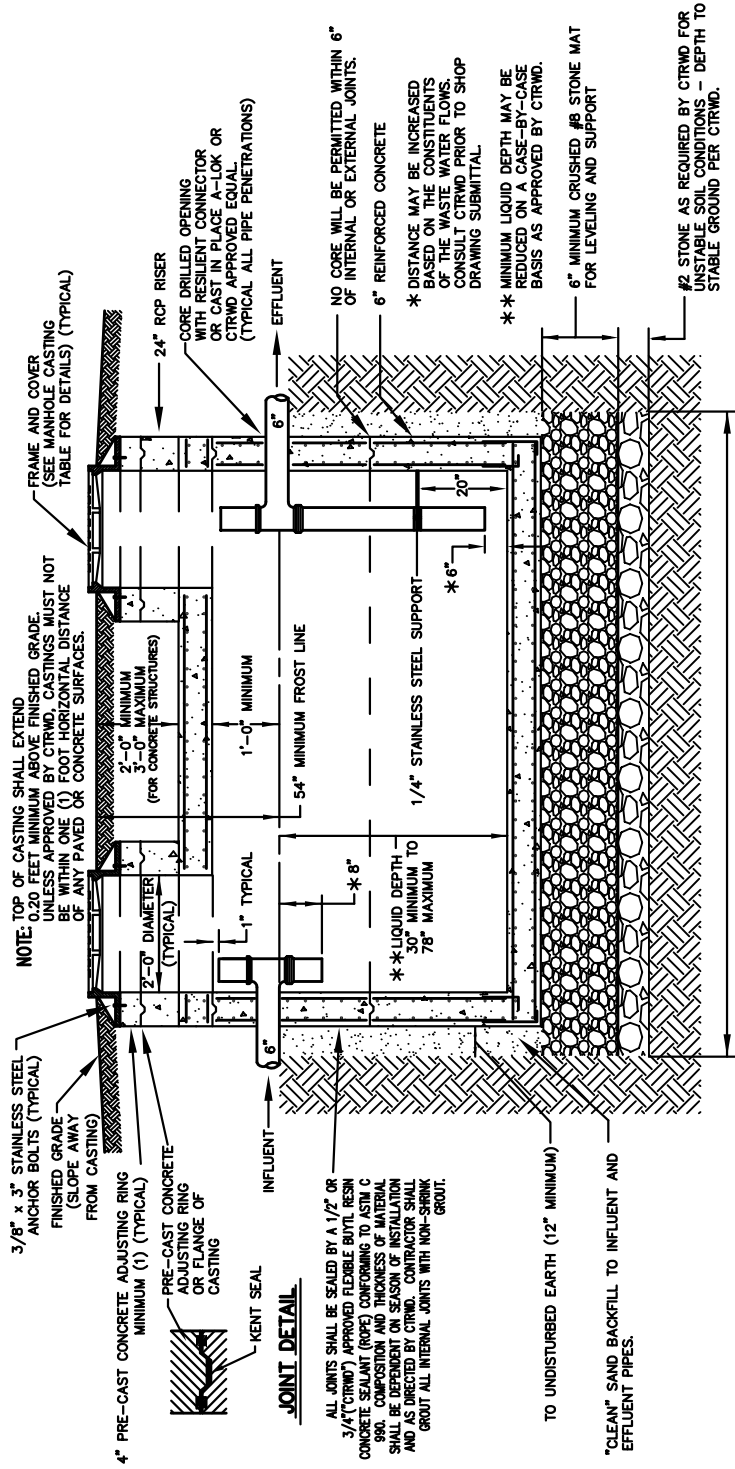


MANHOLE CASTING TABLE	
LOCATION	COVER
18" INCHES OR MORE ABOVE 100 YEAR FLOOD ELEVATION OF ALL WATERWAYS	HEAVY DUTY SOLID
EAST JORDAN 1022Z1G6S OR NEENAH R-1772	
LESS THAN 18" ABOVE 100 YEAR FLOOD ELEVATION OF ALL WATERWAYS	HEAVY DUTY SOLID
EAST JORDAN 1022Z1PT	
LID	
OWNERSHIP	LETTERING
PRIVATE	"SANITARY SEWER"

- NOTE:
- INTERCEPTOR/SEPARATOR SHALL CONFORM TO ASTM C 478 UTILIZING 4,000 PSI CONCRETE.
  - EXTERIOR INSTALLATION MUST BE CONCRETE OR CAST IRON. STEEL INTERCEPTORS/SEPARATORS SHALL ONLY BE INSTALLED INSIDE A BUILDING.
  - CONTRACTOR MAY SUPPLY INTERCEPTOR/SEPARATORS AS MANUFACTURED BY JAY R. SMITH MANUFACTURING COMPANY SERIES 8500. IF INTERIOR INSTALLATION UTILIZED.



*D.A. Clark*



CLAY TOWNSHIP REGIONAL WASTE DISTRICT  
SEPARATOR DETAIL



EXTERIOR INTERCEPTOR/SEPARATOR DETAIL