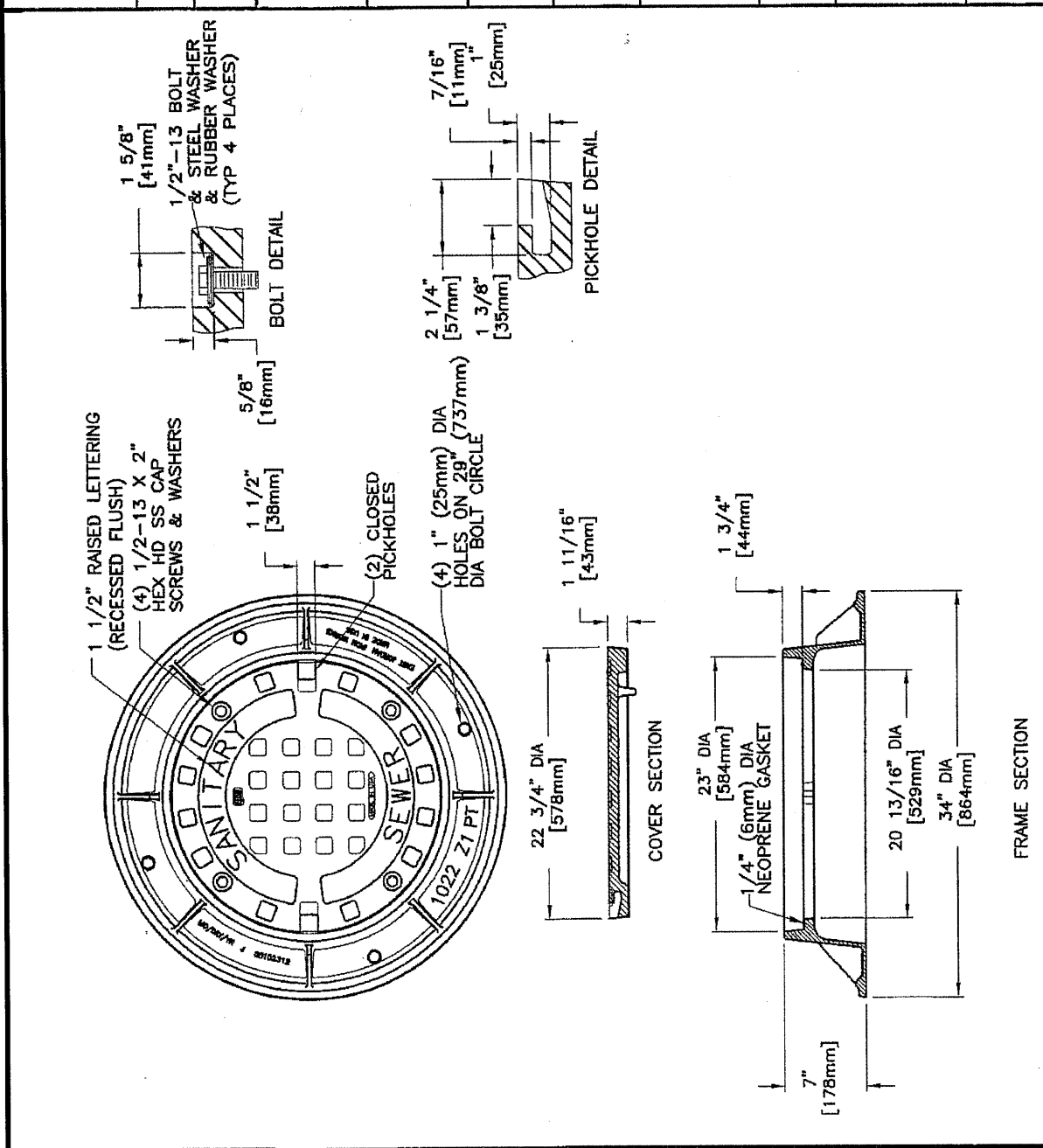


| | | |
|---|--|-------------------------|
| EAST JORDAN IRON WORKS, INC. P.O. BOX 439 EAST JORDAN, MI 49727 1-800-874-4100 FAX 231-536-4458 | | DATE 04/16/04 |
| DRAWN TCL | | |
| WATERTITE ASSEMBLY | | |
| PRODUCT NO. 00102306 | | |
| CATALOG NO. 1020APT 1022Z1PT | | |
| PRODUCT NUMBERS 102312 102163 | | |
| EST. WT. COVER WT: 114 LBS 52kg FRAME WT: 145 LBS 66kg UNIT WT: 259 LBS 117kg | | |
| MAT'L SPEC. COVER - GRAY IRON ASTM A48 CL35B FRAME - GRAY IRON ASTM A48 CL35B | | |
| LOAD RATING HEAVY DUTY | | |



CLAY TOWNSHIP REGIONAL WASTE DISTRICT
WATERTIGHT CASTING DETAIL

